



PUBLIC NOTICE

2020 Floating Aquatic Vegetation Control Program



The California Department of Parks and Recreation Division of Boating and Waterways will be conducting herbicide treatments and mechanical harvesting to control **water hyacinth** (*Eichhornia crassipes*), **South American spongeplant** (*Limnobium laevigatum*), **Uruguay water primrose** (*Ludwigia hexapetala*), and **alligatorweed** (*Alternanthera philoxeroides*) in the Sacramento-San Joaquin Delta region.

The following information is subject to change based on governmental requirements, weather conditions, plant growth and movement, waterway traffic, special-status species surveys, presence of sensitive crops in adjacent lands, and other conditions.

Proposed Herbicide Treatment Period

Select Area 1 Sites and Areas 2-4: Apr. 16, 2020 – Nov. 30, 2020

All Area 1 Sites: June 1, 2020 – Nov. 30, 2020 (north of Hwy 12)



Potential Treatment Areas

Initially in and/or around, but not limited to the following areas: San Joaquin River, Old River, Middle River, Fourteenmile Slough, and Piper Slough. See Figures 1A & 1B for treatment areas.

Herbicides Being Used

Glyphosate, 2,4-D, Imazamox, or Penoxsulam (Herbicides are registered for aquatic use with US Environmental Protection Agency and the California Department of Pesticide Regulation)

Mechanical Harvesting

Potential Harvesting Dates: July 2020 - December 2020

Potential Mechanical Harvesting Control Areas: Select areas of the Delta with high infestations or coverage of water hyacinth. See Figure 2 for potential mechanical harvesting control areas.

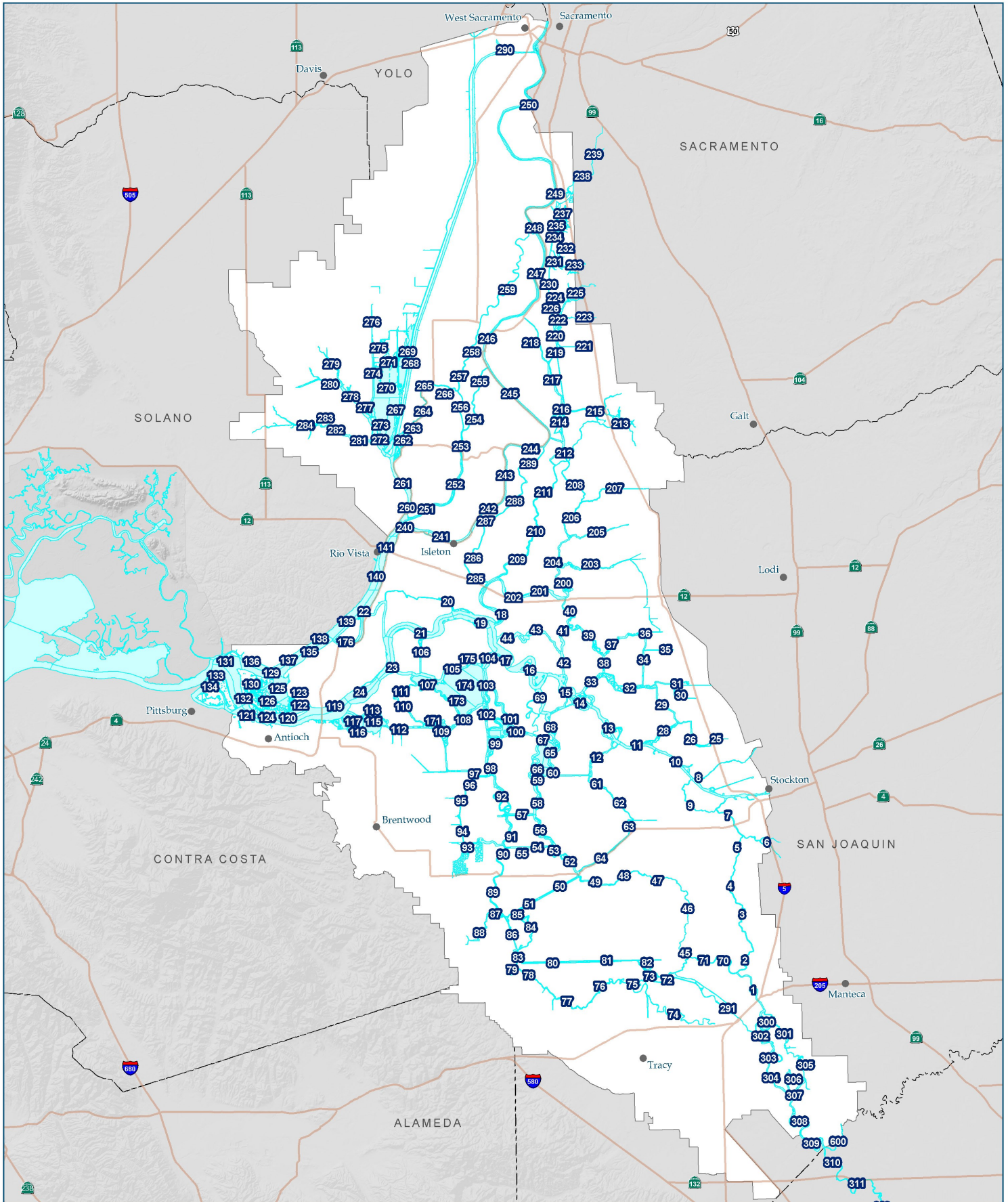


Precautions

The public should not gather on or near boat docks during treatment applications. Boaters, swimmers, fisherman and other recreationists in an area being immediately treated are urged to heed directives by herbicide technicians, as they are aimed at protecting public safety.

Contact Information

To report sightings or for more information regarding the control program, please see DBW's website at www.dbw.parks.ca.gov, call 888-326-2822, or email at AIS@parks.ca.gov.



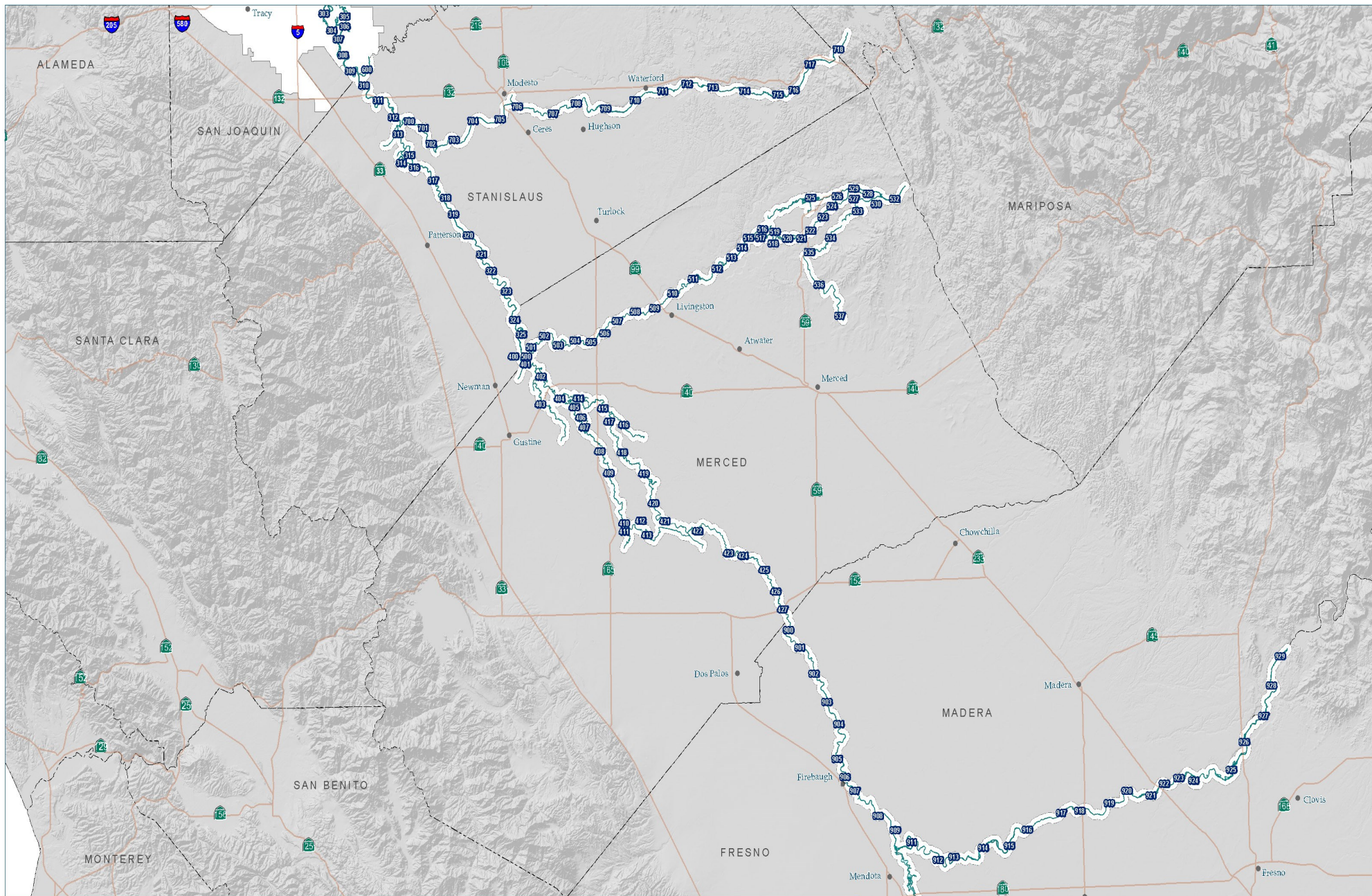
- Cities
- Highways
- - - County Boundaries

Aquatic Invasive Plant Control Program (AIPCP) Project Area for 2019



Unpublished work ©2020 California State Parks, all rights reserved. For permission, contact PublicInfo@parks.ca.gov. All materials contained herein are protected by the United States Copyright Law and may not be reproduced, shared, sold, distributed, transmitted, displayed, repackaged, published or otherwise transferred without the prior written permission of California State Parks. You may not alter or remove any trademark, copyright or other notice from copies of the content. This material is provided for your personal, non-commercial use only. **Data Disclaimer** - Every reasonable effort has been made to assure the accuracy of the data provided, however, California State Parks and its employees and agents disclaim any and all responsibility from or relating to any results obtained in its use. The GIS database and data in the product is subject to constant change and the accuracy and completeness cannot be and is not guaranteed. CALIFORNIA STATE PARKS MAKES NO WARRANTIES OR GUARANTEES, EITHER EXPRESSED OR IMPLIED AS TO THE COMPLETENESS, ACCURACY, OR CORRECTNESS OF SUCH PRODUCT, NOR ACCEPTS ANY LIABILITY, ARISING FROM ANY INCORRECT, INCOMPLETE OR MISLEADING INFORMATION CONTAINED THEREIN. 2/21/2020 Northern_Map L.Escobar

Figure 1A



- Cities
- Highways
- - - County Boundaries

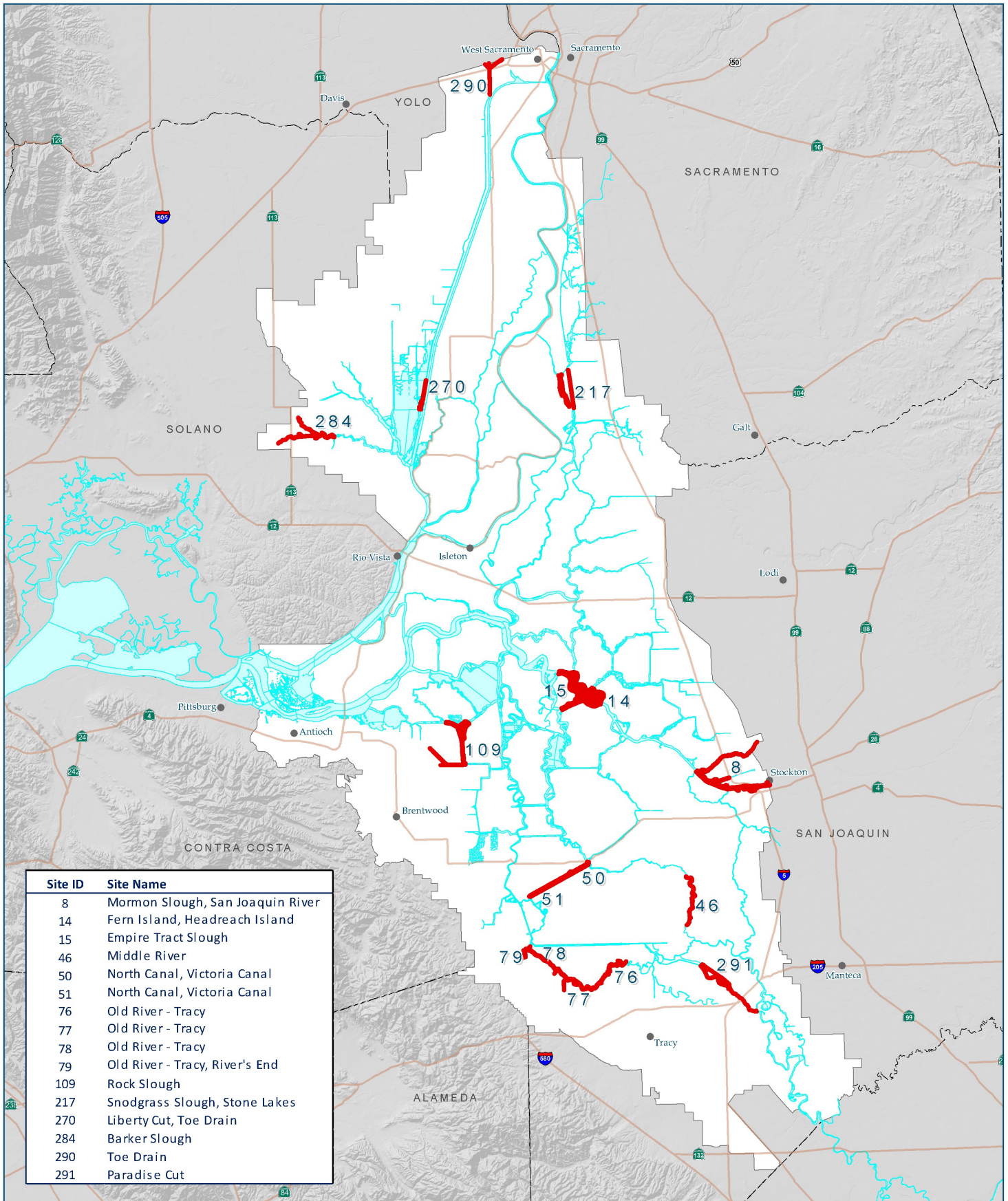
Aquatic Invasive Plant Control Program (AIPCP)

Project Area for 2019



Unpublished work ©2020 California State Parks. All rights reserved. For permission, contact PublicInfo@stateparks.ca.gov. All materials contained herein are protected by the United States Copyright Law and may not be reproduced, shared, sold, distributed, transmitted, displayed, repackaged, published or otherwise transferred without the prior written permission of California State Parks. You may not alter or remove any trademark, copyright or other notice from copies of the content. This material is provided for your personal, non-commercial use only. Data Disclaimer - Every reasonable effort has been made to assure the accuracy of the data provided; however, California State Parks and its employees and agents disclaim any and all responsibility from or relating to any results obtained from its use. The GIS database and data in the product is subject to constant change and the accuracy and completeness cannot be and is not guaranteed. CALIFORNIA STATE PARKS MAKES NO WARRANTIES OR GUARANTEES, EITHER EXPRESSED OR IMPLIED AS TO THE COMPLETENESS, ACCURACY, OR CORRECTNESS OF SUCH PRODUCT, NOR ACCEPTS ANY LIABILITY, ARISING FROM ANY INCOMPLETE, INCOMPLETE OR MISLEADING INFORMATION CONTAINED THEREIN. 2/21/2020 Southern_Map_L.Escobar

Figure 1B



- 2020 Potential Control Sites
- Waterways
- Legal Delta Boundary
- County Boundaries
- Highways
- Cities

Aquatic Invasive Plant Control Program (AIPCP)

Potential Floating Aquatic Vegetation Mechanical Harvesting Sites for 2020



Unpublished work ©2020 California State Parks. All rights reserved. For permission, contact PubInfo@parks.ca.gov. All materials contained herein are protected by the United States Copyright Law and may not be reproduced, shared, sold, distributed, transmitted, displayed, repackaged, published or otherwise transferred without the prior written permission of California State Parks. You may not alter or remove any trademark, copyright or other notice from copies of the content. This material is provided for your personal, non-commercial use only. Data Disclaimer - Every reasonable effort has been made to assure the accuracy of the data provided, however, California State Parks and its employees and agents disclaim any and all responsibility for or relating to any results obtained in its use. The GIS database and data in the product is subject to constant change and the accuracy and completeness cannot be and is not guaranteed. CALIFORNIA STATE PARKS MAKES NO WARRANTIES OR GUARANTEES, EITHER EXPRESSED OR IMPLIED AS TO THE COMPLETENESS, ACCURACY, OR CORRECTNESS OF SUCH PRODUCT, NOR ACCEPTS ANY LIABILITY, ARISING FROM ANY INCORRECT, INCOMPLETE OR MISLEADING INFORMATION CONTAINED THEREIN. 2/4/2020 Potential FAV Mechanical Harvesting J.Martinez

Figure 2